



TIMBERLINE

WOOD SERIES

Artisan by Design
Contemporary by Nature.







Compounding the Nuances of Being Home.

Designed to illuminate an compromised commitment to modern engineering, Quartz Luxury Windows and Doors by Quaker bring to you the opportunity to see what the future has in its view.

Instinctive and Uncompromising, Quaker has brought together a curated and distinct grouping of products, each unique, yet collaborative in their features and options; where a focus has been placed on enhancing a contemporary lifestyle and bringing home to you, the warmth and comforts of everyday life.



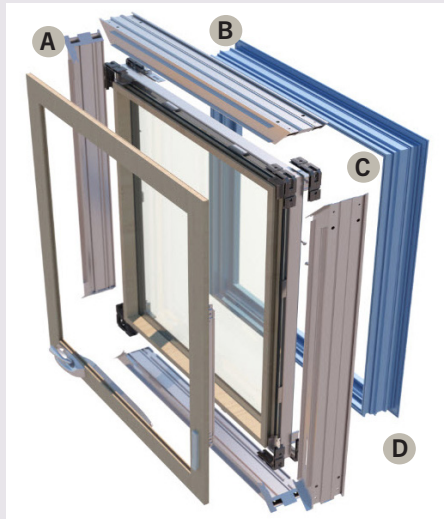
 **TIMBERLINE**
WOOD SERIES

www.quartzluxurywindows.com

Engineered for Tomorrow, Today.

Pushing the boundaries of architectural design, **TimberLine Windows and Doors** defy conventional wisdom by blending the hardened outer shell of an enhanced aluminum frame with softness and beauty of a natural wood interior.

Infusing **OptiCore®**, a patented technology, Quaker has formed a proprietary engineering foundation that offers industry leading **Structural, Thermal and Sound Performance**; the base elements of creative architectural design and the unspoken expectations of contemporary home construction.



A. Radiatta Pine interior allows for both solid paint and transparent stain application.

B. Architecturally-enhanced 4.125" Aluminum Frame offers greater Structural Strength and Superior Performance regardless of climate or location.

C. Sealant-Injected Double Corner Key Construction offers improved structural integrity across the entire window frame regardless of size or shape.

D. 2.875" Sight Lines with Straight or Beveled Glazing Stops offer Larger Openings and Wider Views.

The learn more, please visit



OPTICORE
TECHNOLOGY



www.quartzluxurywindows.com

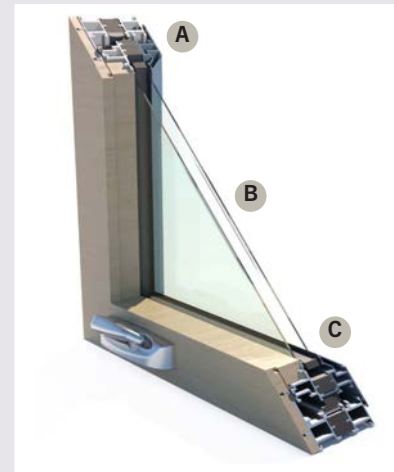




Integrated Performance, a Sustainable Outlook.

Environmentally engineered to meet the demands of every climate, TimberLine Windows and M-Series Doors have been designed with a sustainable outlook on life. From the warm muggy days of the deep South to those chilly and wet nights of the Pacific Northwest, TimberLine creates the barometer that all Windows and Doors are now measured against.

Offered with a series of Energy-Enhanced Glass Packages, each Window and Door has been equipped for year-round maintenance-free versatility, a unique feature found within Quartz Luxury Windows and Doors.



A. Azo-Core Thermal Barrier System with MLP™ technology utilizes a polyurethane foam that has been designed to create greater thermal performance throughout your entire home.

Meets the stringent Energy Star Standards across all 50 states.

B. Cardinal Neat+ Glass is constructed to naturally decompose Greenhouse pollutants and stay cleaner longer.

C. Glass units incorporate Super Spacer, a superior condensation reducing seal that optimizes home energy efficiencies.

Solitude in the Making.

Tranquility, a silent gesture lost in our constant battle with the motions and movements of modern life.

Transformational by design, **Sound Reducing Technology** has been interwoven into the framework of OptiCore®, giving TimberLine Windows the chance to separate the clamor of outside from the restful silence of your homes inner comforts.





The Seamless Integration of Windows and Doors.

The natural blending of technologies has formed the base foundation of the **M-Series Door System**.

From the **Azon® Polyurethane Foam** to **Azo-Brading** and the addition of **SolidCore™** infused door panels, M-Series Doors have been built to maximize Structural and Thermal Performance, while maintaining the torsion, deflection and sheer strength properties garnered towards industry tested AW-rated commercial products.

Unique to the market, the **SolidCore™ Thermal Barrier System** integrates an Azo-Core high-density foam that acts as insulator against the natural conductivity of heat and cold, allowing for superior energy performance and product integrity regardless of size or operational style.






QUARTZ
LUXURY



The artistic fusing of an architectural aluminum exterior with the classic look and feel of a natural wood interior, provides the ageless charm found only in **TimberLine Windows.**

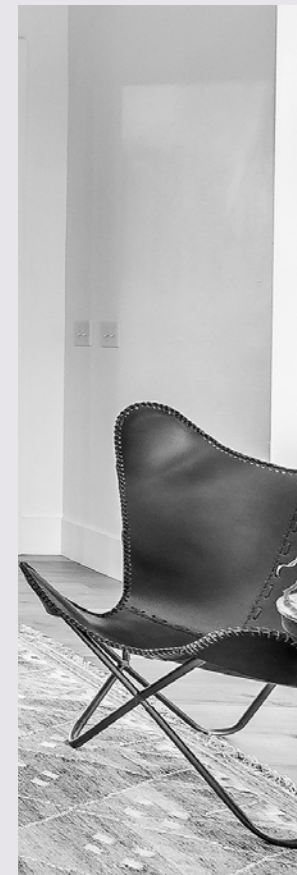
TimberLine Windows.

Duality by design, the melding of these complimentary materials offer the chance to customize your living space and visually share the **Timeless Comfort** seen throughout the broad spectrum of Contemporary Architectural planning.

M-Series Door Systems.

Effortless and Inspiring, M-Series Doors have been created to elevate the visual allure of your home's natural elegance and **Span the Divide** between outside and in.

Broad by definition, this innovative collection incorporates industry leading **SolidCore® Technology** engineered to enrich contemporary lifestyles regardless of climate or environment; from Coastal Plains to Mountain Tops, and Urban Chic to Rural Farmhouse.

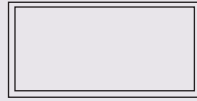




TimberLine Window Options.

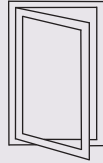
Picture

A fixed-pane window that is available in nearly any shape or size.



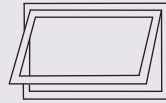
Casement

Swinging outward, this window pivots from the side and is available with Roto-Crank or OS operating hardware.



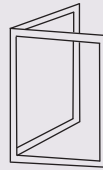
Awning

A window that pivots from the top and swings open at the bottom.



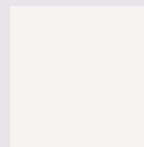
Corner

A uniquely designed picture window that angles back at 90° to wrap around a homes corner.

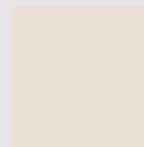


Hardware Colors and Finishes.

Endearing colors, chosen to enhance and frame our thoughts and visions.



White



Gold



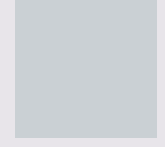
Polished Brass



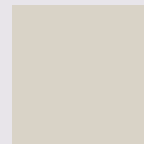
Black



New Dark Bronze



Satin Nickel



Beige



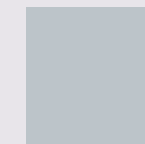
Sandstone



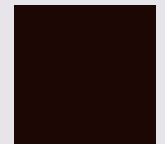
Antique Brass



Oil Rubbed
Bronze



Brushed
Chrome



Faux Bronze

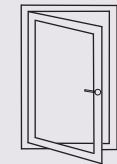




M-Series Door Options.

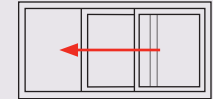
Terrace

Available to swing in or out, the door is hinged and pivots from the side.



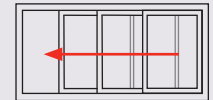
Sliding

Constructed using both a fixed and operating door panel that slides inside a framed track.



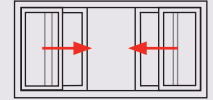
Multi-Slide

Similar to the Bi-Parting Door, this system utilizes multiple panels that slide and stack to one side of the frames openings.



Bi-Parting

Allowing for movement from multiple panels that slide independently outwards and inwards, this door system is known for its expansive views and larger gateways.



Innovation at your Door Step. The M-Series Difference.



- Azon™ Polyurethane Thermal Barrier System
- Thermally Broken Aluminum Frame and Doors Panels
- Stainless Steel 1.81" Dual Quad Precision Roller System
- Corner Key Frame Design
- Multi-Point Locking Systems
- Stainless Steel Tracks with Removable Sills
- GBG and SDL Options
- High Performance 2604 and 2605 Powder and Class 1 Anodized Finishes



Solids, Textures, Metallics and Woods.

The blending of colors and textures becomes reality, as the space is created and highlights are formed.

Earth

Parallel, mellowed tones that accentuate the naturalness of the interior graining.



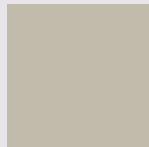
Satin Creme



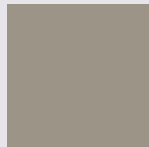
New Bone White



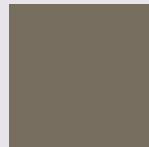
Oyster White



Beige



Sandstone



Beige Grey



Toffee



Earthtone



Patina Green



Moss Green



New Dark Bronze

Metallics

Luminous and Vibrant, melding tones and shaping light.



Clear Anodized



Champagne Light Range



Champagne Dark Range



Light Bronze



Dark Bronze Light Range



Dark Bronze Dark Range



Black Anodized

Historic

Defined to **Bridge** the **Space** between Yesterday and Today.



Teal



Interstate Blue



Holly Green



Redwood



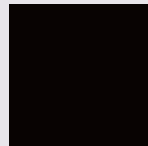
Burgundy



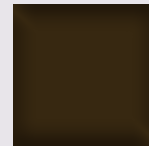
Chestnut

Textures

Dimensioned to form Layers, Depth and Composition.



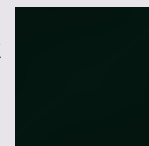
Textured Black



Textured Dark Espresso



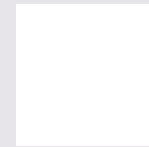
Textured Dark Bronze



Textured Black Solar LE

Studio

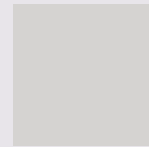
Vivid and Focused, carefully balancing the **perspectives** of Modern and Traditional.



White



Sky White II



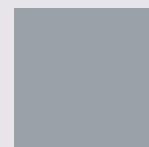
Polar White



Agate Grey



Slate Grey



Telegrey I



Dark Bronze



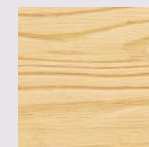
Gloss Black



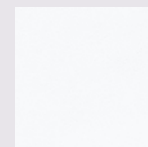
Black

Interior Finish Options

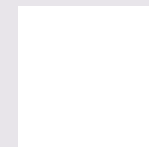
Channeling the **Essence** of your Inner Space.



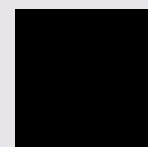
Natural



Primed



White



Black

Technical References.

Glazing Package	U-Factor	Solar Heat Gain Coefficient	Visible Transmittance	Condensation Resistance
Energy Enhanced *	Lower	Lower	Lower	High
Energy North *	Lower	Moderate	Highest	High
Energy Basic	Moderate	Low	High	Highest
Energy Plus *	Lowest	Low	High	Higher
Energy 3S	Low	Lowest	Moderate	Highest
Energy Max	Lowest	Lowest	Moderate	Higher
* Includes application of LoE-I89 Glass Coating				

U-Factor : represents the heat flow through a window and is measured in BTU/hr-ft². The lower the rating the better the reduction in heat loss.

Solar Heat Gain (SHGC) : is used to measure the amount of radiated heat entering a building. The lower the rating, the better the glazing package is in preventing solar gain.

Visible Transmittance (VT) : measures the amount of visible light transmitted through a window.

Condensation Resistance (CR) : measures how well a window resists condensation on its interior surface. The Higher the rating, the better the glazing package is able to resist condensation.

Comparative Glazing Options	STC	OITC
Single Pane Window (Not Offered in CityLine or TimberLine)	20	19
1" (25.5 mm) 2-Pane IG Casement	32	28
1" (25.5 mm) 2-Pane Laminated IG Casement	35	31
1.375" (34.6 mm) 3-Pane Laminated IG Casement	38	33
Other Glass Configurations available upon request		

STC (Sound Transmission Class) : is used to calculate the results of soundproofing between rooms or through walls. It is a measurement of decibel reduction. The STC Frequency Scale ranges from 125 Hz to 4000 Hz. The higher the number, the better the product in dampening ambient sound.

OITC (Outside Inside Transmission Class) : this rates the transfer of sound between an outdoor space and an indoor space. OITC has a frequency scale between 80 Hz and 4000 Hz and is used for calculating sound controls against low frequency exterior sounds. The higher the number, the better the product is in dampening sound.





Quaker Window Products
504 U.S. Hwy 63 South
Freeburg, MO 65035
(800) 347-0738
www.quakerwindows.com



To learn more about OptiCore®
Technology, please scan here



QZ-TL 0522