

EdgeLine

Steel Replica Series


QUARTZ
LUXURY





Architecturally elegant, where sleek lines and oversized glass provides access and balance to the brilliance of the outside world.

With its historic undertones and classic sight lines, the EdgeLine Series by Quaker has been engineered to bring light and life deeper into your home. A distinct collection that draws upon the traditional look of steel while offering an architectural aluminum alternative that recasts the limitations of thermal and structural performance.

Envision Tomorrow, Today.







EdgeLine H4503 Windows Size & Performance

- Thermally Broken Aluminum Framing System
 - 3-1/4” Extruded Aluminum Frame
 - 1-1/2” Sight Lines - Fixed
 - 2-5/16” Sight Lines - Vent
- Dual Euro-Groove Frame System to Improve Water and Wind Performance
- Sealant Injected Ddouble Corner Key Frame Design Technology Offers Maximum Structural Performance
- Azo-Core Thermal Barrier System for Increased Energy Efficiency and Reduced Thermal Conductivity
- Multiple Glazing Package Options Compliment Region and Climate
- Structural Mull Availability Offers Wider and Taller Sizing Options
- Internal or Simulated Divided Light (SDLs) Grids Available
- High-Performance 2604 and 2605 Powder Finishes
- Custom Color Matching and Heat Reflective Paint Options

Window Sizing				
Operation	Width		Height	
	Min	Max	Min	Max
Awning Roto	20”	72”	18”	84”
Awning Push Out	20”	72”	18”	84”
Casement Roto	18”	48”	18”	84”
Casement Push Out	18”	36”	18”	84”
Direct Set	12”	120”	12”	120”
Single Hung	17”	72”	30”	132”

Window Performance						
Operation	Rating	Structural Load (P.S.F.)	Air Infiltration	Water (P.S.F.)	U-Value	SHGC
Awning Roto	CW-85	85.2	0.12	15.03	0.31 - 0.35	0.20 - 0.31
Awning Push Out	CW-90	90.2	0.12	15.03	0.31 - 0.35	0.20 - 0.31
Casement Roto	CW-90	90.2	0.01	15.03	0.31 - 0.35	0.20 - 0.31
Casement Push Out	CW-90	90.2	0.11	15.03	0.31 - 0.35	0.20 - 0.31
Direct Set	AW-100	100.2	0.01	15.03	0.23 - 0.29	0.24 - 0.37
Single Hung	AW-60	60.15	0.07	10.66	0.29 - 0.33	0.21 - 0.31

EdgeLine M-Series M600 IL Lockbox Doors Size & Performance

- Thermally Broken Aluminum Frame and Door Panels
 - 4-1/2" Frame Depth
 - 2-7/8" Sight Lines
- Azon™ Polyurethane Thermal Barrier
- Architecturally Correct Dimensional Glass Cut-Out
- Single and 2-Panel French Door Panel Configurations
- Corner Key Frame Technology for Maximum Structural Performance
- Continuous Frame - Doors and Transoms
- Architectural Barrel Hinges
- Multipoint Hardware
- Internal or Simulated Divided Light (SDLs) Grids Available
- 1" or 1-3/8" Glazing Pocket
- Offered with Standard, ADA, or No Sill Options
- High-Performance 2604 and 2605 Powder Finishes
- Custom Color Matching and Heat Reflective Paint Options

Grid Options	
Inswing - Standard	
External Grid Max Height	Internal Grid Max Height
5/8"	1/2"

Door Sizing					
Operation	Width		Height		Max UI
	Min	Max	Min	Max	
Single Panel	24"	48"	78-3/4"	120"	168"
Two Panel	48"	96"	78-3/4"	120"	216"
Sidelight	15.5"	96"	15.5"	120"	192"
Transom	15.5"	108"	15.5"	120"	192"





EdgeLine M-Series M600 Elongated Lockbox Doors Size & Performance

- Thermally Broken Aluminum Frame and Door Panels
 - 4-1/2" Frame Depth
 - 2-7/8" Sight Lines
- Azon™ Polyurethane Thermal Barrier
- Architecturally Correct Dimensional Glass Cut-Outs
- True Divided Lights - Available in Three or Four Lite
- Single and 2-Panel French Door Panel Configurations
- Corner Key Frame Technology for Maximum Structural Performance
- Continuous Frame - Doors and Transoms
- Architectural Barrel Hinges
- Multipoint Hardware
- Internal or Simulated Divided Light (SDLs) Grids Available
- 1" or 1-3/8" Glazing Pocket
- Offered with Standard, ADA, or No Sill Options
- High-Performance 2604 and 2605 Powder Finishes
- Custom Color Matching and Heat Reflective Paint Options

Grid Options	
Inswing - Standard	
External Grid Max Height	Internal Grid Max Height
5/8"	1/2"

Door Sizing					
Operation	Width		Height		Max UI
	Min	Max	Min	Max	
Single Panel - Three Lite	24"	48"	80"	96"	168"
Single Panel - Four Lite	24"	48"	96"	120"	168"
Two Panel - French - Three Lite	48"	96"	80"	96"	216"
Two Panel - French - Four Lite	48"	96"	96"	120"	216"
Sidelite	15.5"	96"	15.5"	120"	192"
Transom	15.5"	108"	15.5"	120"	192"





Glazing Packages Options

Glazing Package Options				
Glazing Package	U-Value	SHGC	VT	CR
Energy Enhanced	Lower	Lower	Lower	High
Energy North	Lower	Moderate	Highest	High
Energy Basic	Moderate	Low	Higher	Highest
Energy Plus	Lowest	Low	Higher	Higher
Energy 3S	Low	Lower	Moderate	Highest
Energy Max	Lower	Lower	Moderate	Higher
Energy 4S	Low	Lowest	Moderate	Highest
Energy 4S+	Lower	Lowest	Moderate	Higher
Triple Pane	Lowest	Lowest	High	Higher

- **U-Value:** Represents the heat flow through a window and is measured in BTU/hr-ft². The lower the rating the better the reduction in heat loss.
- **Solar Heat Gain (SHGC):** Used to measure the amount of radiated heat entering a building. The lower the rating, the better the glazing package in preventing solar gain.
- **Visible Transmittance (VT):** Measures the amount of visible light transmitted through a window.
- **Condensation Resistance (CR):** Measures how well a window resists condensation on its interior surface. The higher the rating, the better the glazing package is able to resist condensation.

Comparative Glazing Packages

Comparative Glazing Packages	STC	OITC
Single Pane Window	20	19
1" (25.5 mm) 2-Pane IG Casement	32	28
1" (25.5 mm) 2-Pane Laminated IG Casement	35	31
1.375" (34.6 mm) 3-Pane Laminated IG Casement	38	33
Other Glass Configurations Available Upon Request		

- **STC (Sound Transmission Class):** Used to calculate the results of soundproofing between rooms or through walls. It is a measurement of decibel reduction. The STC Frequency Scale ranges from 125 Hz to 4000 Hz. The higher the number, the better the product in dampening ambient sound.
- **OITC (Outside Inside Transmission Class):** This rates the transfer of sound between an outdoor space and an indoor space. OITC has a frequency scale between 80 Hz and 4000 Hz and is used when calculating sound controls against low frequency exterior sounds. The higher the number, the better the product is in dampening sound.









A Modern Twist in a Retro Type of Way

Uniquely styled to bridge the patterns of contemporary architectural creativity, dynamic features and simplistic construction, these characteristics have been blended together to offer FGIA certified AW-ratings tied to oversized gateway sizes.

Engineered for those that want a bold steel inspired design without sacrificing energy efficiency or performance.

Historic Flair meets Modern Performance

Visually ageless, the Edgeline Series by Quaker brings forward the graded sight lines of steel windows, while adding a modern twist and urban flair.

Designed to match the iconic look of yesterday and drawn to define the contemporary feel of tomorrow, the Edgeline Series fuses modern technological advances with a proprietary frame design to provide superior performance and product flexibility.

Uncompromising construction, framed to perfection.



A. Azon™ Thermal Barrier utilizes a polyurethane foam that has been designed to create advanced thermal performance throughout your entire home.

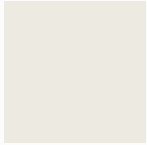
B. Euro-Groove Frame and Sash System achieves a tighter perimeter seal that improves water, air and wind performance.

C. 1" or 1-3/8" Glazing Pockets offer alternate glass package options.

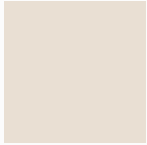
Solids, Textures and Resembles Metallics

Natural Tones

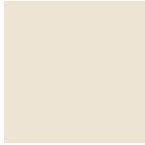
A blending of stepped contrasts and subtle shades.



Satin Creme



New Bone White



Oyster White



Beige



Sandstone



Beige Grey



Toffee



Earthtone



Patina Green



Moss Green



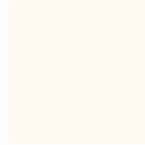
New Dark Bronze

Monotones

Illuminating the neutral spectrum of color saturation and hue.



White



Sky White II



Polar White



Agate Grey



Slate Grey



Telegrey I



Dark Bronze



Black



Black
Heat Reflective



Dark Bronze
Heat Reflective

Historic Shades

Deepened colors that draw from classic designs.



Teal



Interstate Blue



Holly Green



Redwood



Burgundy



Chestnut

Textures

Mixed to create visual depth and dimension on window and door surfaces.



Textured
Black



Textured
Dark Bronze



Textured
Dark Gray



Textured Dark
Espresso



Textured
Dark Espresso
Heat Reflective



Textured Black
Heat Reflective



Textured
Dark Bronze
Heat Reflective

Resembles Metallics

A modern and consistent interpretation of anodized finishes.



Clear
Anodized



Champagne
Light Range



Champagne
Dark Range



Light
Bronze



Dark Bronze
Light Range



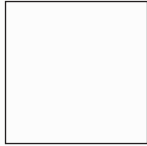
Dark Bronze
Dark Range



Black
Anodized

Hardware Colors and Finishes

Endearing colors, chosen to enhance and frame our thoughts and visions.



White



Satin Nickel



Faux Bronze



Matte Black

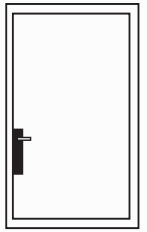


Some photography courtesy of Berk Walters Homes

Operational Door Styles

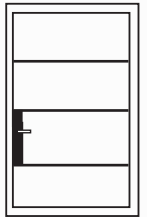
Lockbox Door

A hinged door that offers a full glass light and a floating keyed lockbox. Available in both Single and 2-Panel French Door Operational Styles.



Elongated Lockbox Door

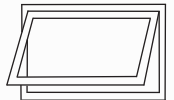
A hinged door that offers true divided lite glass and a keyed lockbox. Available in both Single and 2-Panel French Door Operational Styles.



Operational Window Styles

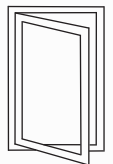
Awning

A window that pivots from the top and swings open at the bottom.



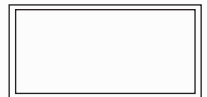
Casement

Swinging outward, this window pivots from the side. Available with Roto or Push-Out hardware.



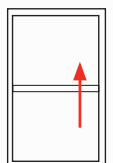
Picture

A fixed-pane window that is available in nearly any shape or size.



Single Hung

A two-sash window where the bottom sash moves vertically to open and close.





Quaker Window Products
504 U.S. Hwy 63 South
Freeburg, MO 65035
(800) 347-0438
www.quakerwindows.com



To learn more about
Quartz Luxury Windows
and Doors by Quaker,
please scan here:



QTZ-EL BRCHR 0825