

# TimberLine

Wood Series



  
QUARTZ  
LUXURY





The TimberLine Series of Quartz Luxury Windows and Doors by Quaker has been created to illuminate a commitment to modern product engineering and bring to you the opportunity to see what the future has in its view.

Instinctive and uncompromising, TimberLine offers a curated and distinct portfolio of products, each one collaborative in its features and options, that carry the warmth and comforts of everyday life home to you.













## TimberLine Windows Size & Performance

- Patented OptiCore® Technology Framing System
  - 4-1/8" Architectural Grade Aluminum Frame
  - 4-9/16" & 6-9/16" Jamb Extensions
  - Dual Euro-Groove Frame System
- Azo-Core Thermal Barrier System for Increased Energy Efficiency and Reduced Thermal Conductivity
- Multiple Glazing Package Options Compliment Region and Climate
- Structural Mull Availability Offers Wider and Taller Sizing Options
- Square (W600) and Bevel (W605) Stop Options for Enhanced Exterior Look
- Internal or Simulated Divided Light (SDLs) Grids Available
- Pine Interior
- High-Performance 2604 and 2605 Powder Finishes
- Custom Color Matching and Heat Reflective Paint Options
- Easily Removable FlexScreen System

Window Sizing				
Operation	Width		Height	
	Min	Max	Min	Max
Direct Set	15"	144"	15"	144"
Casement	24"	48"	22"	96"
Casement Push-Out	24"	36"	18"	72"
Awning	24"	72"	24"	84"

Series Options	
W600	Square
W605	Beveled



Window Performance						
Operation	Rating	Structural Load (P.S.F.)	Air Infiltration	Water (P.S.F.)	U-Value	SHGC
Direct Set	AW-PG90	90.22	0.01	12.11	0.14 - 0.28	0.24 - 0.36
Casement	AW-PG70	70.18	0.01	12.11	0.17 - 0.28	0.19 - 0.29
Casement Push-Out	AW-100	70.18	0.01	12.11	0.17 - 0.28	0.19 - 0.29
Awning	AW-PG70	70.18	0.01	12.11	0.17 - 0.28	0.24 - 0.36



# TimberLine W-Series Sliding Doors Size & Performance

- Architectural Grade Aluminum Frame
  - 5-5/8" Frame Depth
  - 4-9/16" and 6-9/16" Jamb Depths
- Thermally Broken Aluminum Frame with Patented OptiCore® Panels
- Patented SolidCore™ Thermal Barrier in Doors
- Corner Key Technology for Maximum Structural Performance
- Stainless Steel Quad Precision Bearing Roller System
- Butt Joint Panels & Extruded Fin
- Internal or Simulated Divided Light (SDLs) Grids Available
- Pine Interior
- High-Performance 2604 and 2605 Powder Finishes
- Custom Color Matching and Heat Reflective Paint Options



Series Options	
W200S	Sliding



Sliding Door Performance		
Operation / Style	Structural Rating	U-Value Range
Two Panel	R-50 / LC-50	0.26 - 0.31
Four Panel	R-50 / LC-50	0.26 - 0.31
SDL Depth (Max Profile Height)		
Exterior	7/16"	
Interior	9/16"	

Sliding Door Sizing (W200S)					
Operation	Width		Height		Max UI
	Min	Max	Min	Max	
Two Panel	60"	168"	78"	144"	264"
Four Panel	120"	240"	78"	144"	408"
Sidelight - Narrow	15"	108"	15"	143-7/8"	191"
Sidelight - Fixed Panel	15"	108"	15"	143-7/8"	191"
Transom	12"	120"	12"	108"	191"











# TimberLine W-Series Swing Doors Size & Performance

- Architectural Grade Aluminum Frame
  - 5-5/8" Frame Depth
  - 4-9/16" and 6-9/16" Jamb Depths
- Thermally Broken Aluminum Frame with Patented OptiCore® Panels
- Patented SolidCore™ Thermal Barrier in Doors
- Corner Key Technology for Maximum Structural Performance
- Available as Inswing (C200I) or Outswing (C200O)
- Adjustable Butt Hinges offer Multi-Directional Adjustment
- Standard, ADA, or No Sill Options
- Butt Joint Panels & Extruded Fin
- Wide and Narrow Panel Options
- Internal or Simulated Divided Light (SDLs) Grids Available
- Pine Interior
- High-Performance 2604 and 2605 Powder Finishes
- Custom Color Matching and Heat Reflective Paint Options

Swing Door Performance		
Operation / Style	Structural Rating	U-Value Range
Single Panel	R-50 / LC-50	0.27 - 0.31
Two Panel - French	R-50 / LC-50	0.27 - 0.31
SDL Depth (Max Profile Height)		
Exterior	7/16"	
Interior	9/16"	

Series Options	
W200I	Inswing
W200O	Outswing



Swing Door Sizing (W200I / W200O)					
Operation	Width		Height		Max UI
	Min	Max	Min	Max	
Single Panel	24"	48"	78"	144"	180"
Two Panel - French	48"	96"	78"	144"	216"
Sidelight - Narrow	15"	108"	15"	143-7/8"	191"
Sidelight - Fixed Panel Set	15"	108"	15"	143-7/8"	191"
Transom	12"	120"	12"	108"	191"



## Glazing Packages Options

Glazing Package Options				
Glazing Package	U-Value	SHGC	VT	CR
Energy Enhanced	Lower	Lower	Lower	High
Energy North	Lower	Moderate	Highest	High
Energy Basic	Moderate	Low	Higher	Highest
Energy Plus	Lowest	Low	Higher	Higher
Energy 3S	Low	Lower	Moderate	Highest
Energy Max	Lower	Lower	Moderate	Higher
Energy 4S	Low	Lowest	Moderate	Highest
Energy 4S+	Lower	Lowest	Moderate	Higher
Triple Pane	Lowest	Lowest	High	Higher

- **U-Value:** Represents the heat flow through a window and is measured in BTU/hr-ft<sup>2</sup>. The lower the rating the better the reduction in heat loss.
- **Solar Heat Gain (SHGC):** Used to measure the amount of radiated heat entering a building. The lower the rating, the better the glazing package in preventing solar gain.
- **Visible Transmittance (VT):** Measures the amount of visible light transmitted through a window.
- **Condensation Resistance (CR):** Measures how well a window resists condensation on its interior surface. The higher the rating, the better the glazing package is able to resist condensation.

## Comparative Glazing Packages

Comparative Glazing Packages	STC	OITC
Single Pane Window	20	19
1" (25.5 mm) 2-Pane IG Casement	32	28
1" (25.5 mm) 2-Pane Laminated IG Casement	35	31
1.375" (34.6 mm) 3-Pane Laminated IG Casement	38	33
Other Glass Configurations Available Upon Request		

- **STC (Sound Transmission Class):** Used to calculate the results of soundproofing between rooms or through walls. It is a measurement of decibel reduction. The STC Frequency Scale ranges from 125 Hz to 4000 Hz. The higher the number, the better the product in dampening ambient sound.
- **OITC (Outside Inside Transmission Class):** This rates the transfer of sound between an outdoor space and an indoor space. OITC has a frequency scale between 80 Hz and 4000 Hz and is used when calculating sound controls against low frequency exterior sounds. The higher the number, the better the product is in dampening sound.







## The Innovative Difference

A natural blending of proprietary technologies have formed the base foundation of the TimberLine Door System.

From the Azon® Polyurethane Foam to Azo-Brading and the addition of SolidCore™ infused panels, TimberLine Doors have been built to maximize Structural and Thermal Performance while maintaining the torsion, deflection and sheer strength properties garnered towards industry tested AW-rated commercial products.



Unique to the market, Quaker's patented SolidCore™ Thermal Barrier System integrates an Azo-Core high-density foam that acts as an insulator against the natural conductivity of heat and cold, allowing for superior energy performance and product integrity regardless of size or operational style.

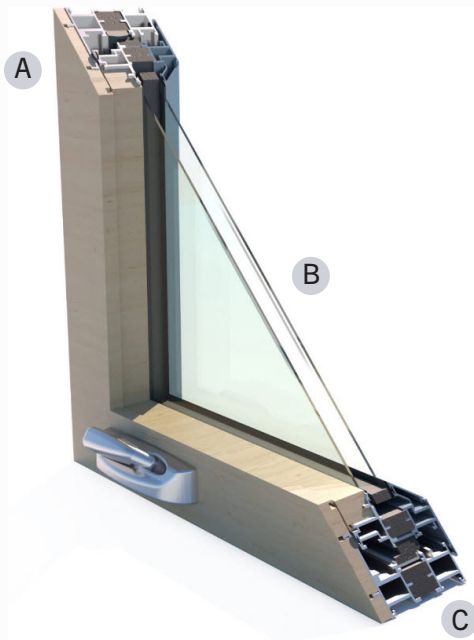




## Effortless Performance

Engineered for the extremes, TimberLine Windows were designed with comfort in mind. From the cold winds of the Northeast seaboard to the heat of the Southwest deserts, TimberLine defines the standards on how modern day performance is measured.

Offered with a series of energy-enhanced glass packages, each window and door has been equipped for year-round maintenance-free versatility, a unique quality found within the Quartz Portfolio.



A. Azo-Core Thermal Barrier System with MLP™ technology utilizes a polyurethane foam that has been designed to create greater thermal performance throughout your entire home. Meets the stringent Energy Star Standards across all 50 states.

B. Cardinal Neat+ Glass is constructed to naturally decompose greenhouse pollutants and stay cleaner longer.

C. Glass units incorporate Super Spacer, a superior condensation reducing seal that optimizes home energy efficiencies.



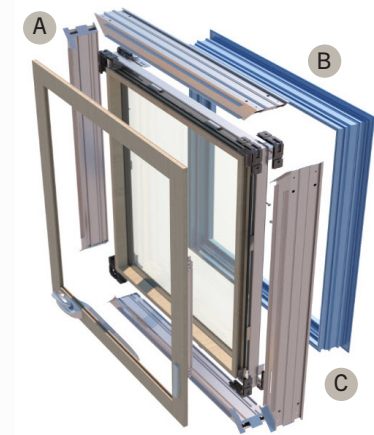




## Technology to the Core

Originally designed for modern commercial construction applications, TimberLine Windows offer the unique blending of advanced architectural design intertwined with a contemporary flair.

Infusing OptiCore®, a proprietary patented technology, Quaker has formed an engineering base that offers Structural, Thermal and Sound Performance that pushes the envelope of spatial design and shaping the future of contemporary home construction.



A. Architecturally-enhanced 4-1/8" aluminum exterior frame with pine interior offers greater structural strength and superior performance.

B. Sealant-Injected double corner key construction offers improved structural integrity across the entire window frame regardless of size or shape.

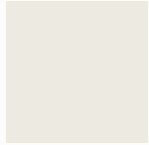
C. 2-7/8" Sight lines with straight or beveled glazing stops offer larger openings and wider views.



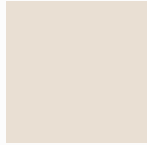
# Solids, Textures and Resembles Metallics

## Natural Tones

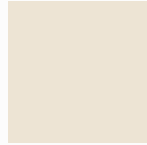
A blending of stepped contrasts and subtle shades.



Satin Creme



New Bone White



Oyster White



Beige



Sandstone



Beige Grey



Toffee



Earthtone



Patina Green



Moss Green



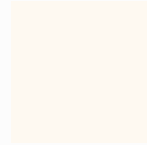
New Dark Bronze

## Monotones

Illuminating the neutral spectrum of color saturation and hue.



White



Sky White II



Polar White



Agate Grey



Slate Grey



Telegrey I



Dark Bronze



Black



Black  
Heat Reflective



Dark Bronze  
Heat Reflective

## Historic Shades

Deepened colors that draw from classic designs.



Teal



Interstate Blue



Holly Green



Redwood



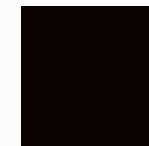
Burgundy



Chestnut

## Textures

Mixed to create visual depth and dimension on window and door surfaces.



Textured  
Black



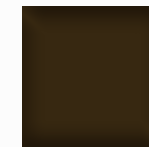
Textured  
Dark Bronze



Textured  
Dark Gray



Textured Dark  
Espresso



Textured  
Dark Espresso  
Heat Reflective



Textured Black  
Heat Reflective



Textured  
Dark Bronze  
Heat Reflective

## Resembles Metallics

A modern and consistent interpretation of anodized finishes.



Clear  
Anodized



Champagne  
Light Range



Champagne  
Dark Range



Light  
Bronze



Dark Bronze  
Light Range



Dark Bronze  
Dark Range



Black  
Anodized

All TimberLine products are offered with optional factory Prefinish Interior Colors.



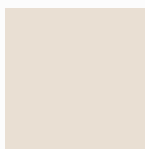
## Hardware Colors and Finishes

Endearing colors, chosen to enhance and frame our thoughts and visions.

### Hardware Color Options



White



Gold



Polished Brass



Matte Black



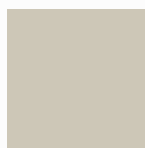
Faux Bronze



Satin Nickel



Beige



Sandstone



Antique Brass



Oil Rubbed  
Bronze



Light Bronze

### Interior Prefinish Options



Natural



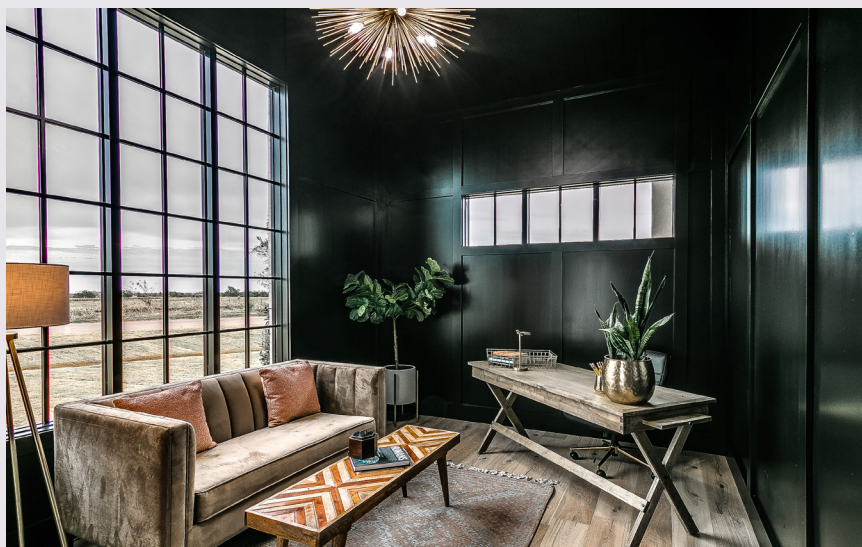
Primed



White



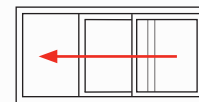
Black



## TimberLine Door Configurations

### Sliding

Constructed using both a fixed and operating door panel that slides inside a framed track.



### Swing

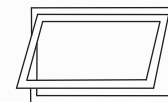
Available in inswing or outswing. Door is hinged and pivots from the side.



## TimberLine Window Configurations

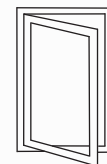
### Awning

A window that pivots from the top and swings open at the bottom.



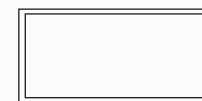
### Casement

Swinging outward, this window pivots from the side. Available with Roto or Push-Out hardware.



### Picture

A fixed-pane window that is available in nearly any shape or size.







Quaker Window Products  
504 U.S. Hwy 63 South  
Freeburg, MO 65035  
(800) 347-0438  
[www.quakerwindows.com](http://www.quakerwindows.com)



To learn more about  
Quartz Luxury Windows  
and Doors by Quaker,  
please scan here:

