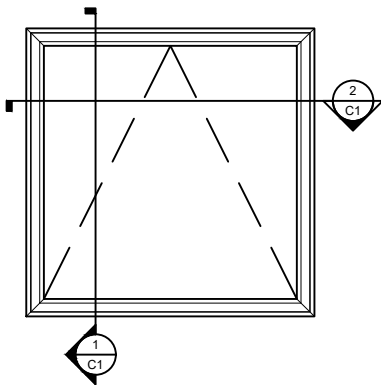
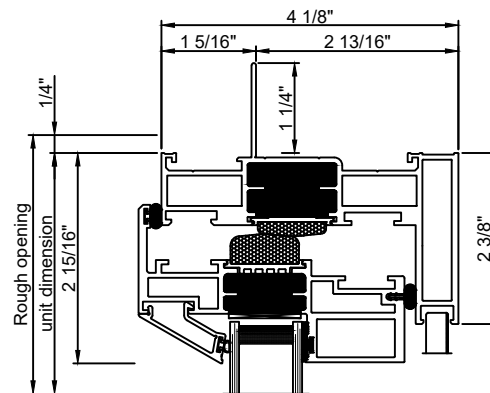


Window cut sections 3/8" = 0' 1"

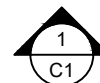
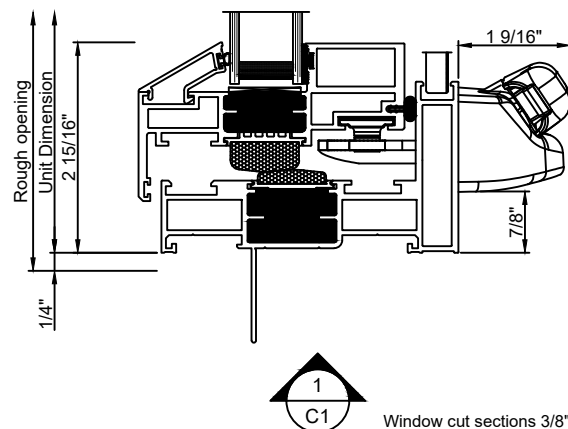
Exterior



Window Elevation 3/8" = 1' 0"



Exterior

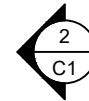
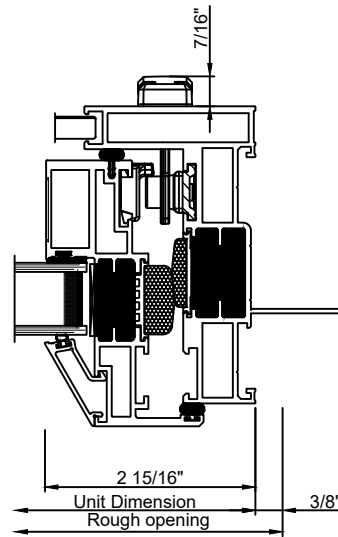
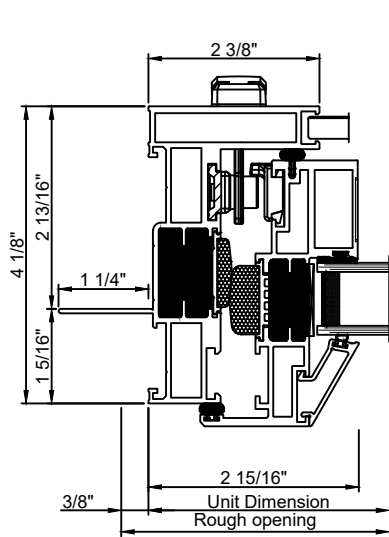


Window cut sections 3/8" = 0' 1"

Note: All dimensions are approximate. Quaker reserves the right to change specifications without notice.

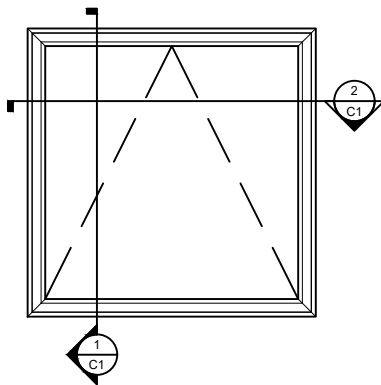
# CityLine (C605) Bevel Push Out Awning Window

Cross section details

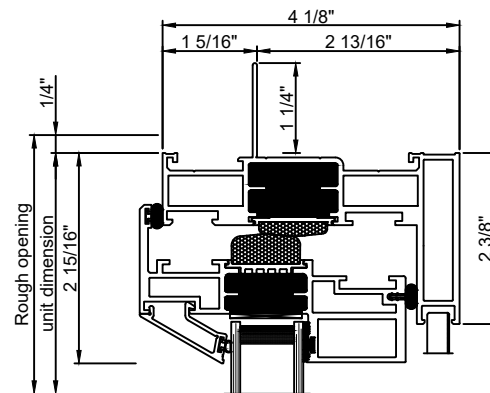


Window cut sections 3/8" = 0' 1"

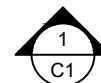
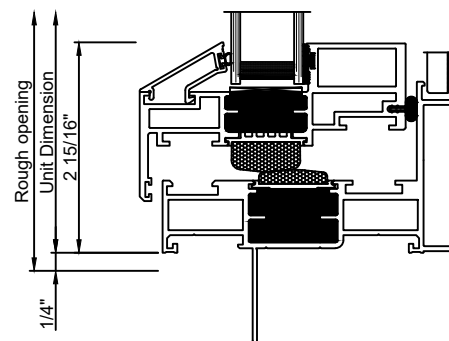
Exterior



Window Elevation 3/8" = 1' 0"

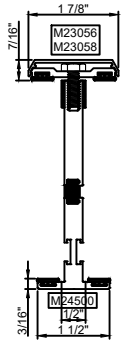


Exterior



Window cut sections 3/8" = 0' 1"

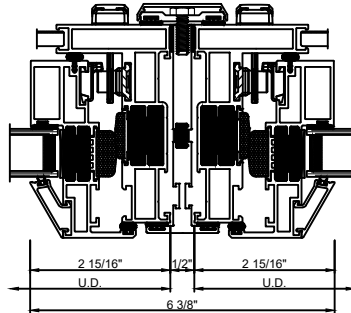
Note: All dimensions are approximate. Quaker reserves the right to change specifications without notice.



## T-MULL

M24500 - T-MULL  
M23056 - BASE  
M23058 - CAP  
BPN-9159 - W.S. (QTY. 4)  
MH1/4 20X3/4 - BOLTS (18" APROX. O.C.)  
5229-PC - ANCHOR (QTY. 2)  
MPS-8X1 1/2 - FASTENERS (QTY. 2)

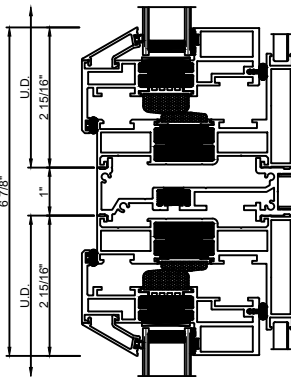
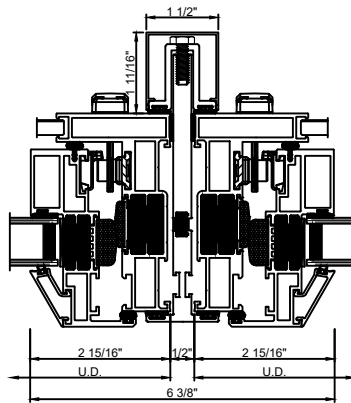
**CAN ONLY BE USED WITH C600**



## T-MULL

M24497 - T-MULL  
M24495 - BASE  
M24496 - CAP  
BPN-9159 - W.S. (QTY. 4)  
MH1/4 20X3/4 - BOLTS (18" APROX. O.C.)  
ANCHOR (QTY. 2)  
MPS-8X1 1/2 - FASTENERS (QTY. 2)

**CAN ONLY BE USED WITH C600**



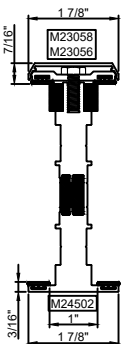
Exterior



## 1" STACK MULL

M23841 - STACK MULL  
M23842 - INTERIOR COVER  
970-300 - WEEP COVER  
QWP-M23844 - END DAM (QTY. 2)  
BRBT46 - POP RIVET (QTY. 8)

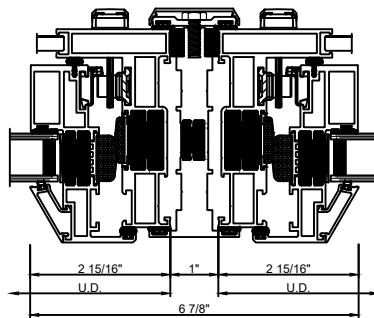
**C600 Install ONLY**



## T-MULL

M24502 - T-MULL  
M23056 - BASE  
M23058 - CAP  
BPN-9159 - W.S. (QTY. 4)  
MH1/4 20X3/4 - BOLTS (18" APROX. O.C.)  
5228 - ANCHOR (QTY. 2)  
MPS-8X1 1/2 - FASTENERS (QTY. 2)

**CAN ONLY BE USED WITH C600**



Exterior

Window cut sections 1:4

Note: All dimensions are approximate. Quaker reserves the right to change specifications without notice.