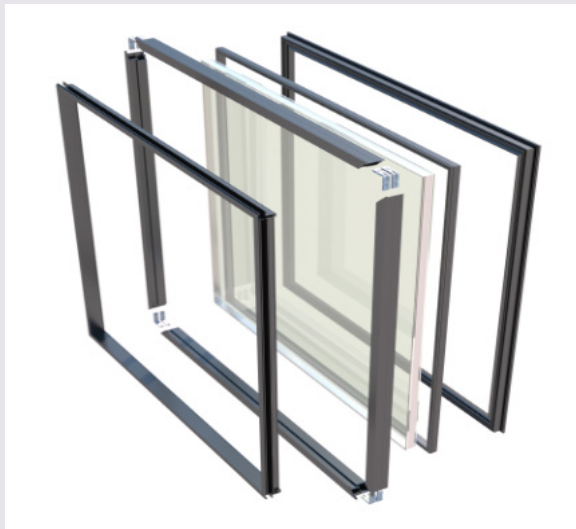




EdgeLine Windows (H450)

With its historic undertones and classic sightlines, EdgeLine Windows have been engineered to bring light and life deeper into your home. A distinct collection that draws upon the traditional look of steel while offering an architectural aluminum alternative that recasts the limitations of thermal and structural performance.

Visually ageless, EdgeLine Windows bring forward graded sight lines seen in classic steel windows and add a modern twist and urban flair. EdgeLine Windows are framed to perfection, with uncompromised construction.



Designed to match the iconic look of yesterday and drawn to define the contemporary feel of tomorrow, Edgeline Windows take modern technological advances and intertwines them with a proprietary frame design to provide a base of Superior Performance and Product Flexibility.








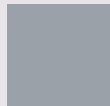
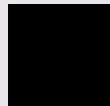

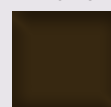
EdgeLine Window (H450) Highlights, Performance and Operations

- Patented OptiCore Technology Framing System
 - 3-1/4" Extruded Aluminum Frame
 - 1-1/2" Sightlines - Fixed
 - 2-5/16" Sightlines - Vent
- Dual Euro-Groove Frame System to Improve Water and Wind Performance
- Sealant Injected Double Corner Key Frame Design Technology Offers Maximum Structural Performance
- Azo-Core Thermal Barrier System for Increased Energy Efficiency and Reduced Thermal Conductivity
- Multiple Glazing Package Options Compliment Region and Climate
- Structural Mull Availability Offers Wider and Taller Sizing Options
- Internal or Simulated Divided Light (SDLs) Grids Available
- High-Performance 2604 and 2605 Powder and Class 1 Anodized Finishes
- Custom Color Matching and Heat Reflective Paint Options

Window Sizing				
Operation	Width		Height	
	Min	Max	Min	Max
Awning Roto	20"	72"	18"	84"
Awning Push Out	20"	72"	18"	84"
Casement Roto	18"	48"	18"	84"
Casement Push Out	18"	36"	18"	84"
Direct Set	10"	120"	10"	120"
Single Hung	17"	72"	30"	132"

Window Performance						
Operation	Rating	Structural Load (P.S.F.)	Air Infiltration	Water (P.S.F.)	U-Value	SHGC
Awning Roto	CW-85	85.2	0.12	15.03	0.31 - 0.35	0.20 - 0.31
Awning Push Out	CW-90	90.2	0.12	15.03	0.31 - 0.35	0.20 - 0.31
Casement Roto	CW-90	90.2	0.01	15.03	0.31 - 0.35	0.20 - 0.31
Casement Push Out	CW-90	90.2	0.11	15.03	0.31 - 0.35	0.20 - 0.31
Direct Set	AW-100	100.2	0.01	15.03	0.23 - 0.29	0.24 - 0.37
Single Hung	AW-60	60.15	0.07	10.66	0.29 - 0.33	0.21 - 0.31

Interior & Exterior Color Options

									
White	Satin Creme	Sky White II	Oyster White	New Bone White	Polar White	Beige	Sandstone	Toffee	Beige Grey
									
Earthtone	Teal	Interstate Blue	Patina Green	Holly Green	Moss Green	Redwood	Burgundy	Chestnut	New Dark Bronze
									
Agate Grey	Slate Grey	Telegrey I	Dark Bronze	Gloss Black	Black	Textured Black	Textured Dark Bronze	Textured Dark Grey	Textured Dark Espresso
									
Resembles Clear Anodized	Resembles Champagne Light Range	Resembles Champagne Dark Range	Resembles Dark Bronze Light Range	Resembles Dark Bronze Dark Range	Resembles Light Bronze	Resembles Black Anodized	Textured Dark Espresso Heat Reflective	Textured Black Heat Reflective	



Quaker Window Products
 504 U.S. Hwy 63 South
 Freeburg, MO 65035
 (800) 347-0438
www.quartzluxurywindows.com

Discover More Here :

